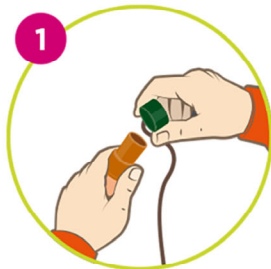


Installation Instructions



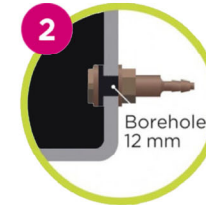
STEP 1

Take the green tops off the Blumat sensors and soak the cones in water for at least 15 minutes.



STEP 2

Screw the bulkhead fitting (Blumat Tank Connector) into the hole on the bottom of the bucket with the nipple side facing out and the washer on the inside of the reservoir. **Important: The black rubber washer goes on the inside of the bucket.**



STEP 3

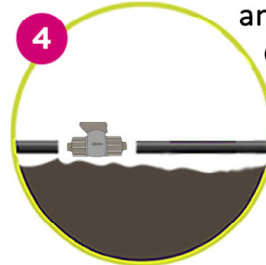
Lay the 8mm tubing out around your plants or where you need the water and cut the tubing at the places you want the Blumats.

STEP 4

Attach the first on/off valve a few inches away from the reservoir and the second one at the end of the tubing.

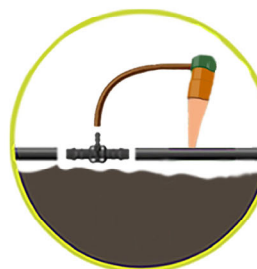
STEP 5

Fill the Blumats with water and, underwater, attach the the green tops back onto the ceramic cones.



STEP 6

Push the Blumats into the soil and attach the black T's into the 8mm supply line.



STEP 7

Fill the reservoir with water and purge out any air in the supply line by opening the end-of-line valve until air stops coming out.

(303) 998-1323
(888) 317-1600

Better Ways to Water

info@sustainablevillage.com
www.sustainablevillage.com